

LIVSRUM

KRÆFTRÅDGIVNINGSCENTER



LIVSRUM

KRÆFTRÅDGIVNINGSCENTER

Bygherre: Kræftens Bekæmpelse & Realdania
Arkitekt: **EFFEKT**
Ingeniør: Lyngkilde
Entreprenør: Hoffmann
Specialister: Jeanet Lemche, PHD Sundheds arkitektur
Anne Kathrine Frandsen, PHD Helende arkitektur









NÆSTVED SYGEHUS I DAG



NÆSTVED SYGEHUS I DAG

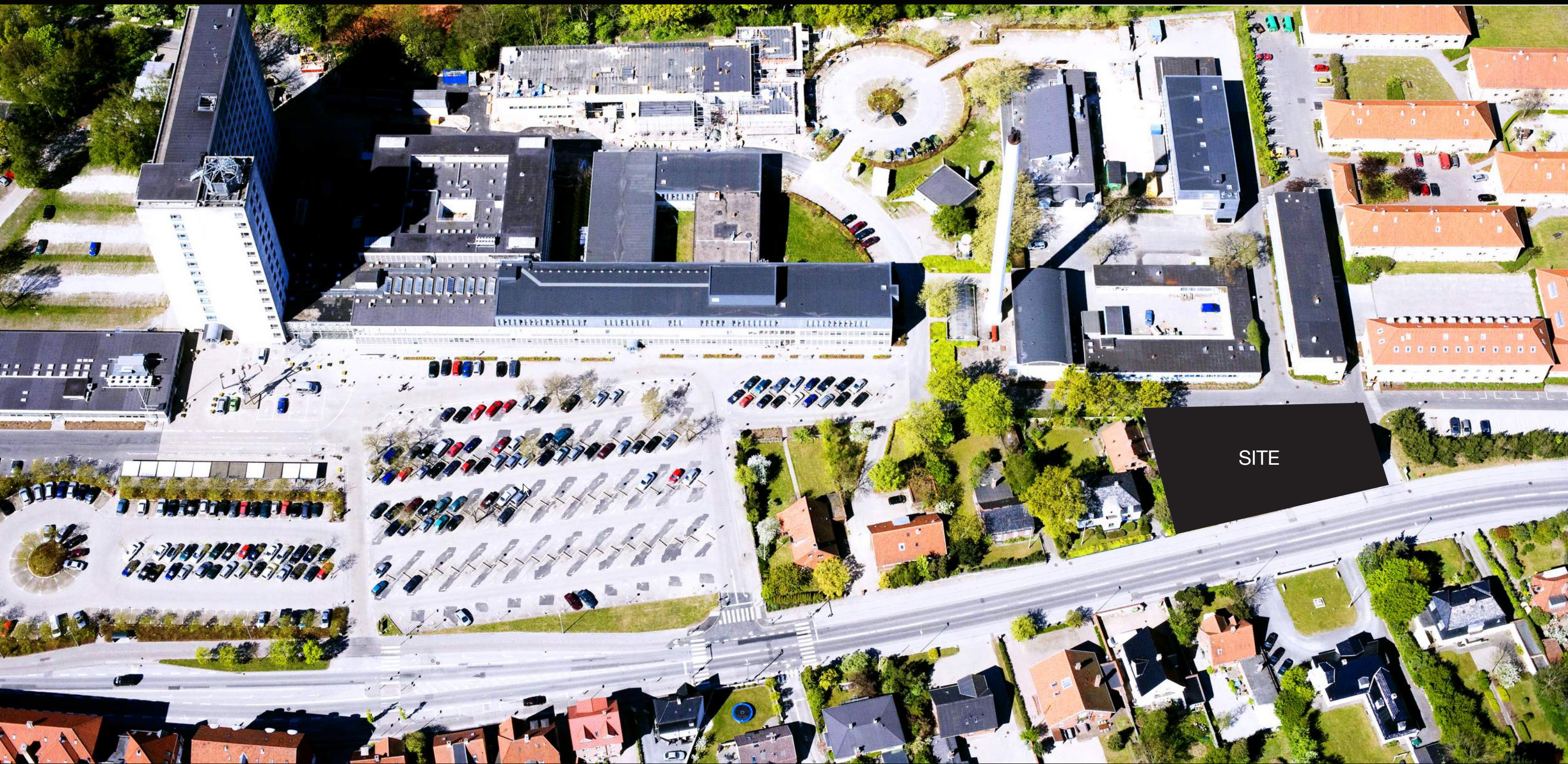
+



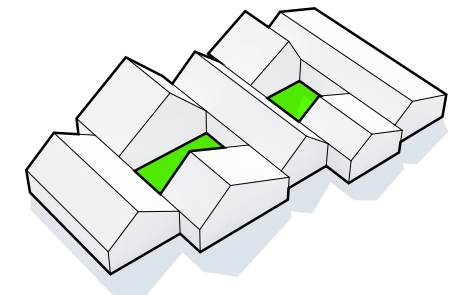
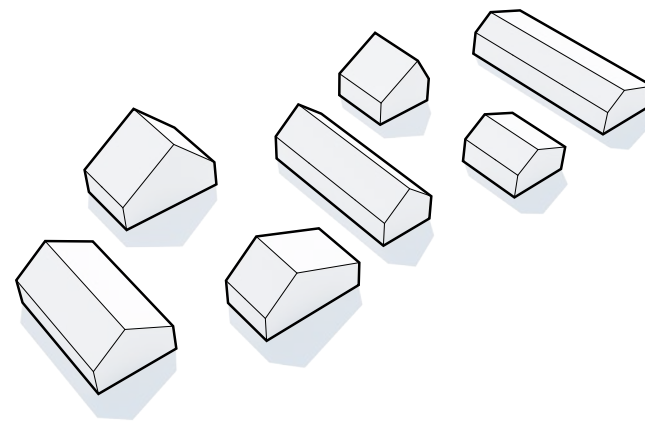
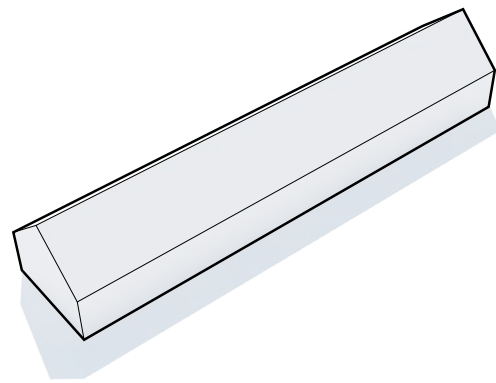
HVORDAN KAN VI SKABE RUM TIL ANDRE ASPEKTER END KLINISK BEHANDLING?



Visionen er at skabe et hjemligt, åbent og velkommende hus. Et sted som føles mere som et trygt hjem end en institution.
Et hus som både er moderne og genkendeligt. Et alternativ til det sterile og funktionelle hospitalsmiljø.



The site is located in a schizophrenic situation merging the hospital area and a historical villa road.



Programme

The program of the Cancer Counselling Centre is composed of 7 main functions: Living room, workshop, training facilities, administration, library and lounge, seminar rooms, spaces for wellness.

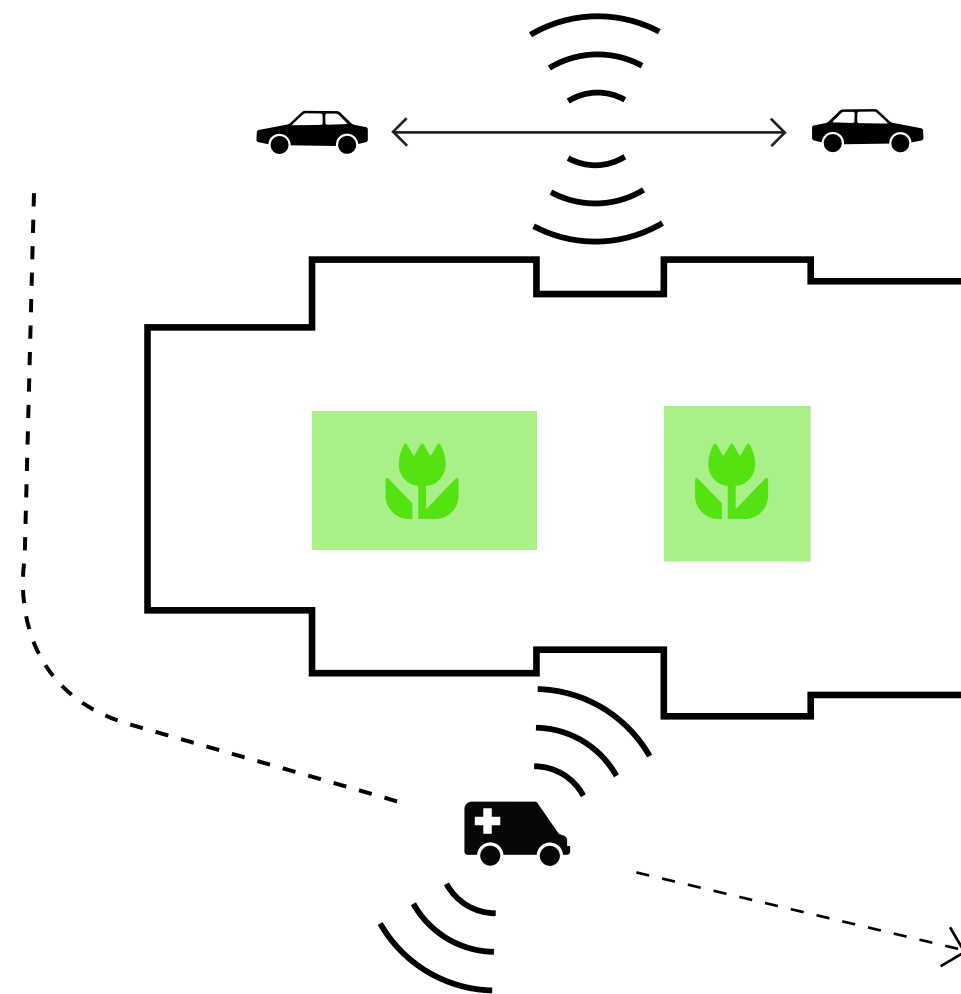
A small village

Rather than creating a traditional uniform building the functions are shaped into 7 small houses promoting human scale, richness and variation in the overall spatial experience.

Protected courtyards

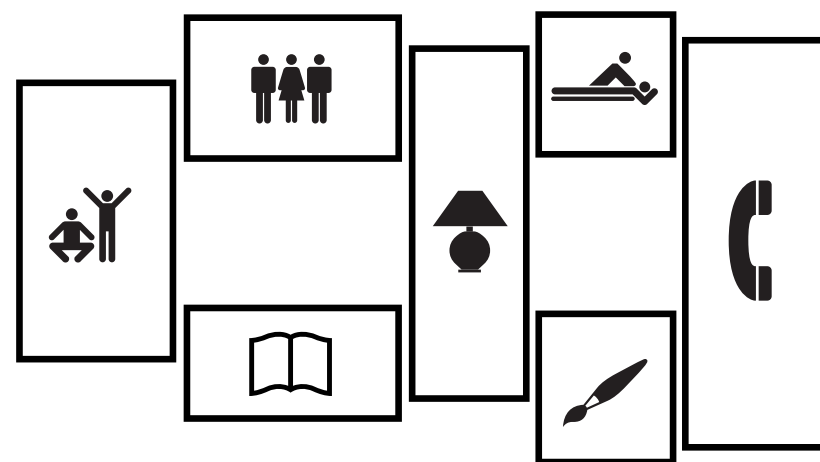
The 7 houses are merged back into one coherent plan creating two protected green courtyards that become an integrated part of the house.





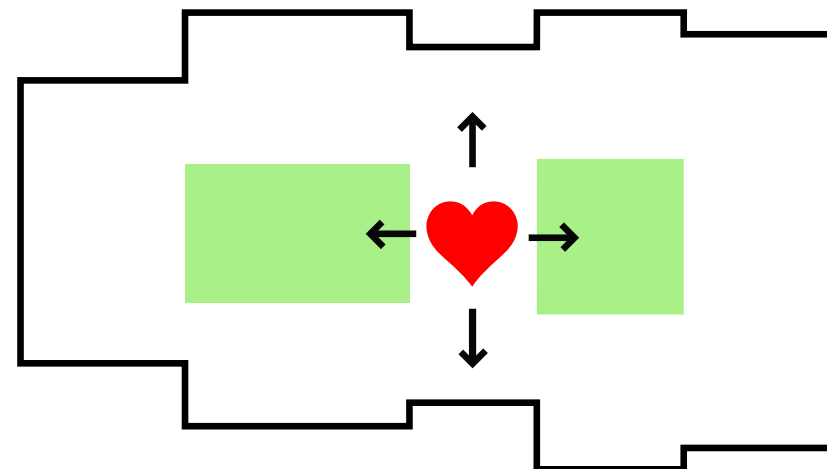
Protected courtyards

The plot is surrounded by roads on three sides - the noisy Ringstedgade on one side and Herluf Vænge on the other two. By placing the courtyard in the center it is protected against noise and becomes an integrated part of the house.



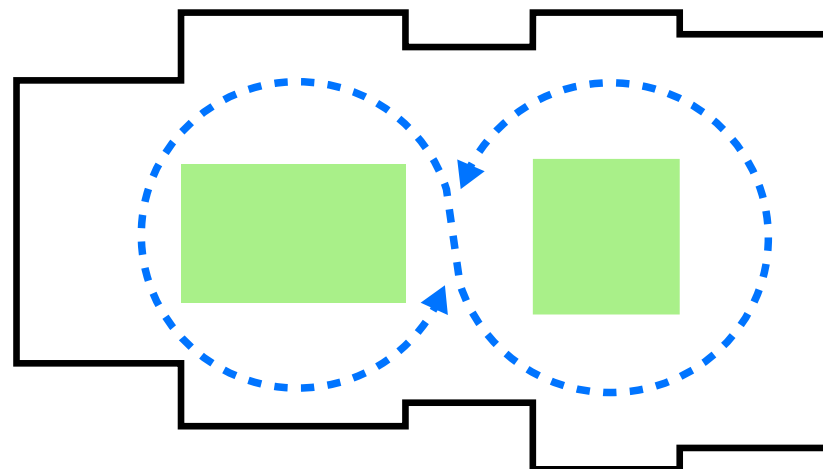
7 Villas - One building

The layout consists of 7 different houses - each with a specific program. The 3 large houses contain the workout area, the living space and the administration. These three are joined by 4 smaller houses containing other functions.



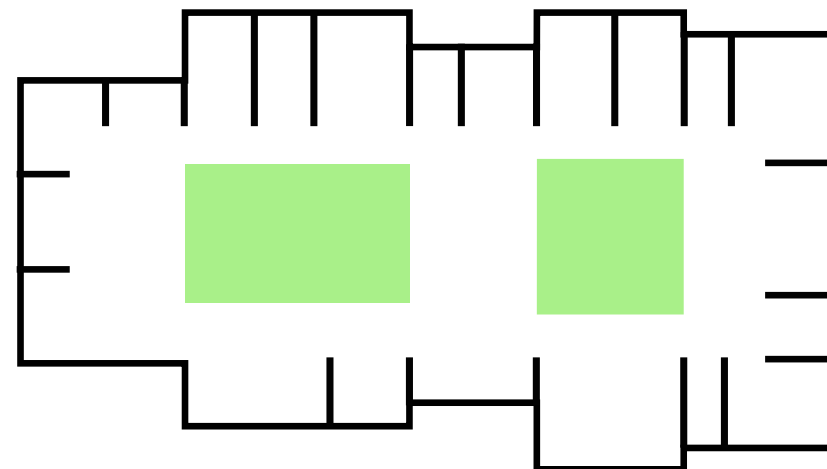
The heart in the centre

The large communal 'Livsrum' (living space) is the heart of the house and forms a natural center with a simple and straightforward layout, consistent with the other functions of the building.



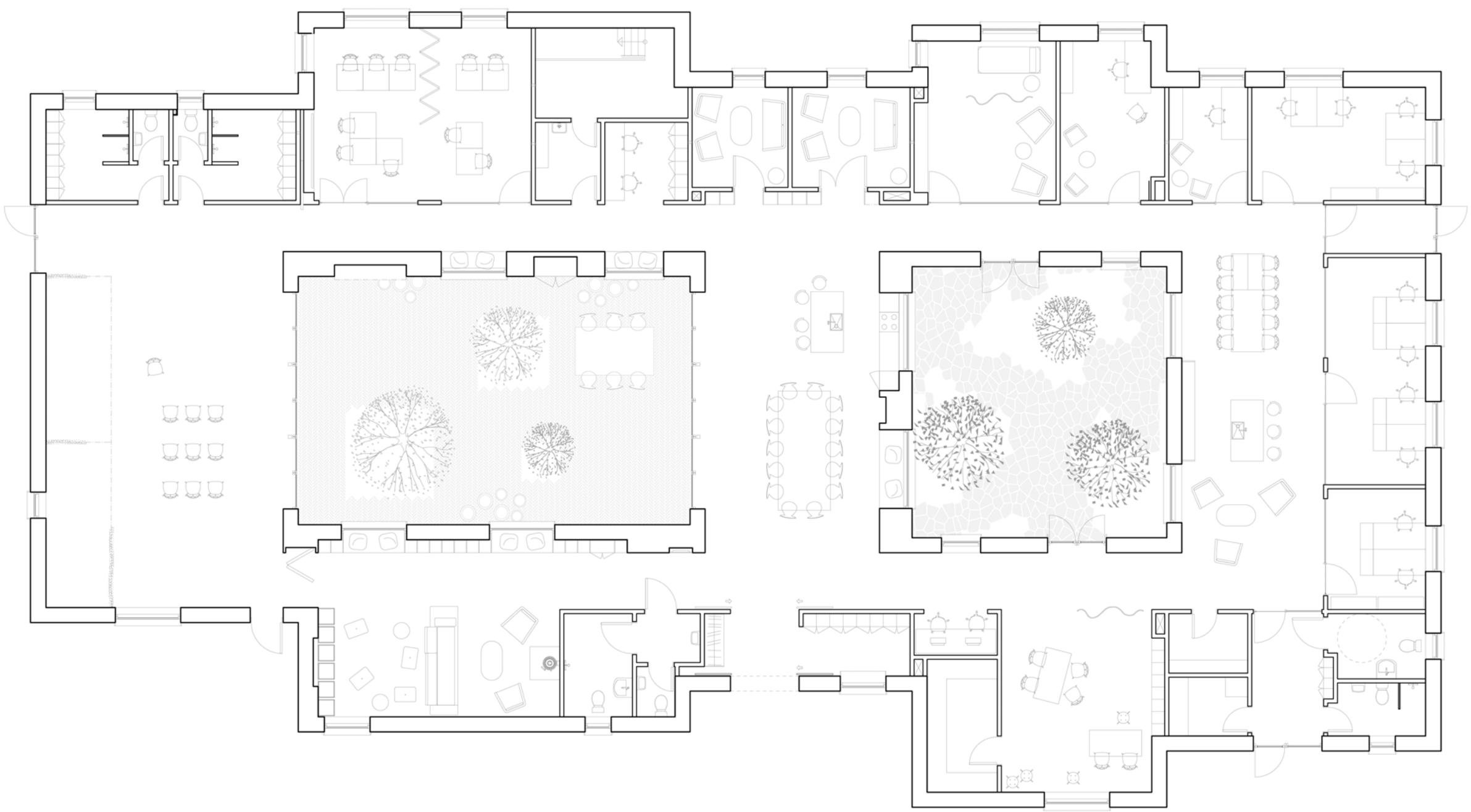
7 houses - One space

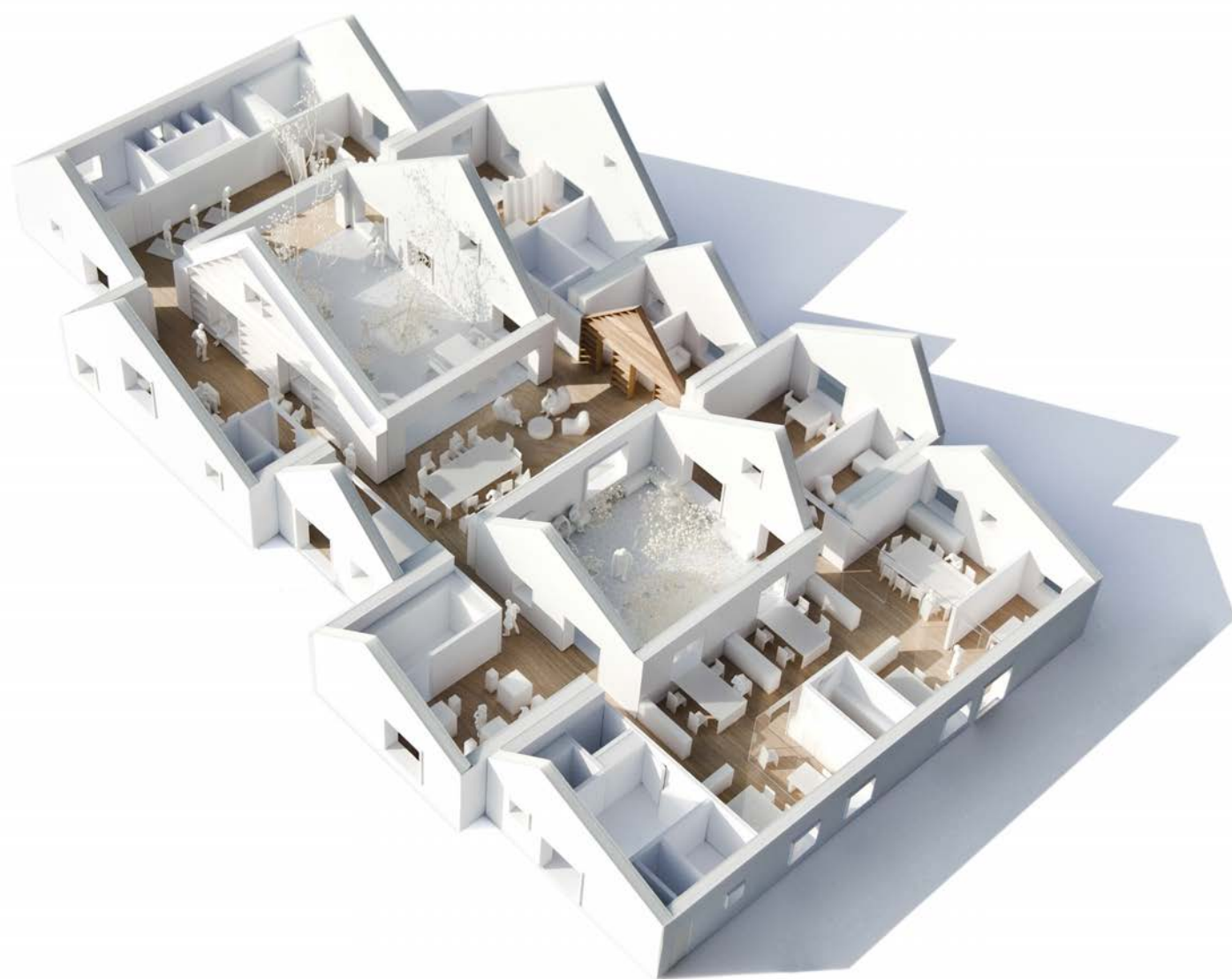
The location of the living space in the centre allows for unhindered continues circulation throughout the house. There is always several routes to the different areas.



A variety of spaces

All rooms face the 2 central courtyards. Hereby all outdoor and indoor areas are connected both visually and physically. Together, the 7 houses create one open house plan with multiple niches and nooks with many possibilities of use.







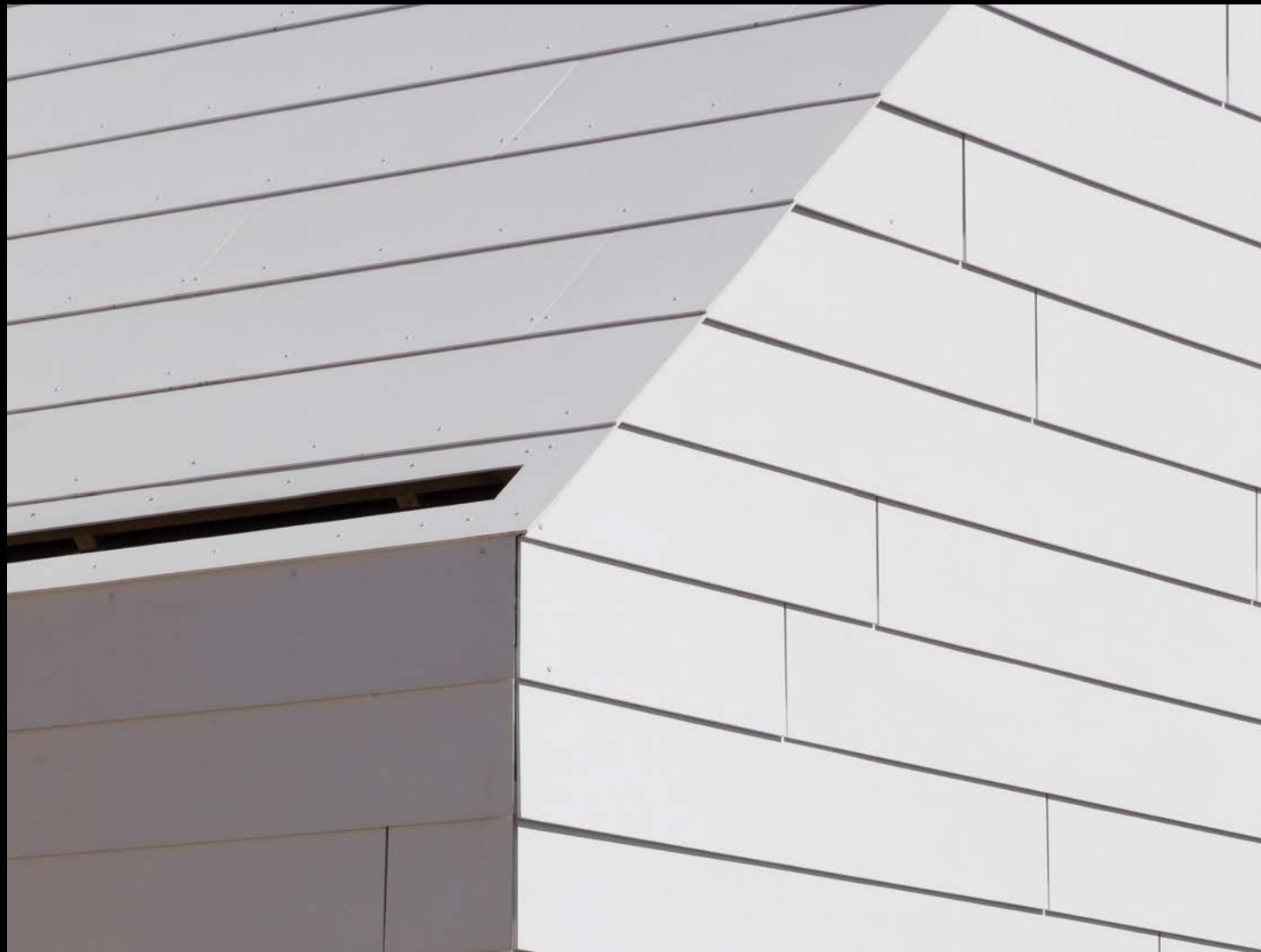
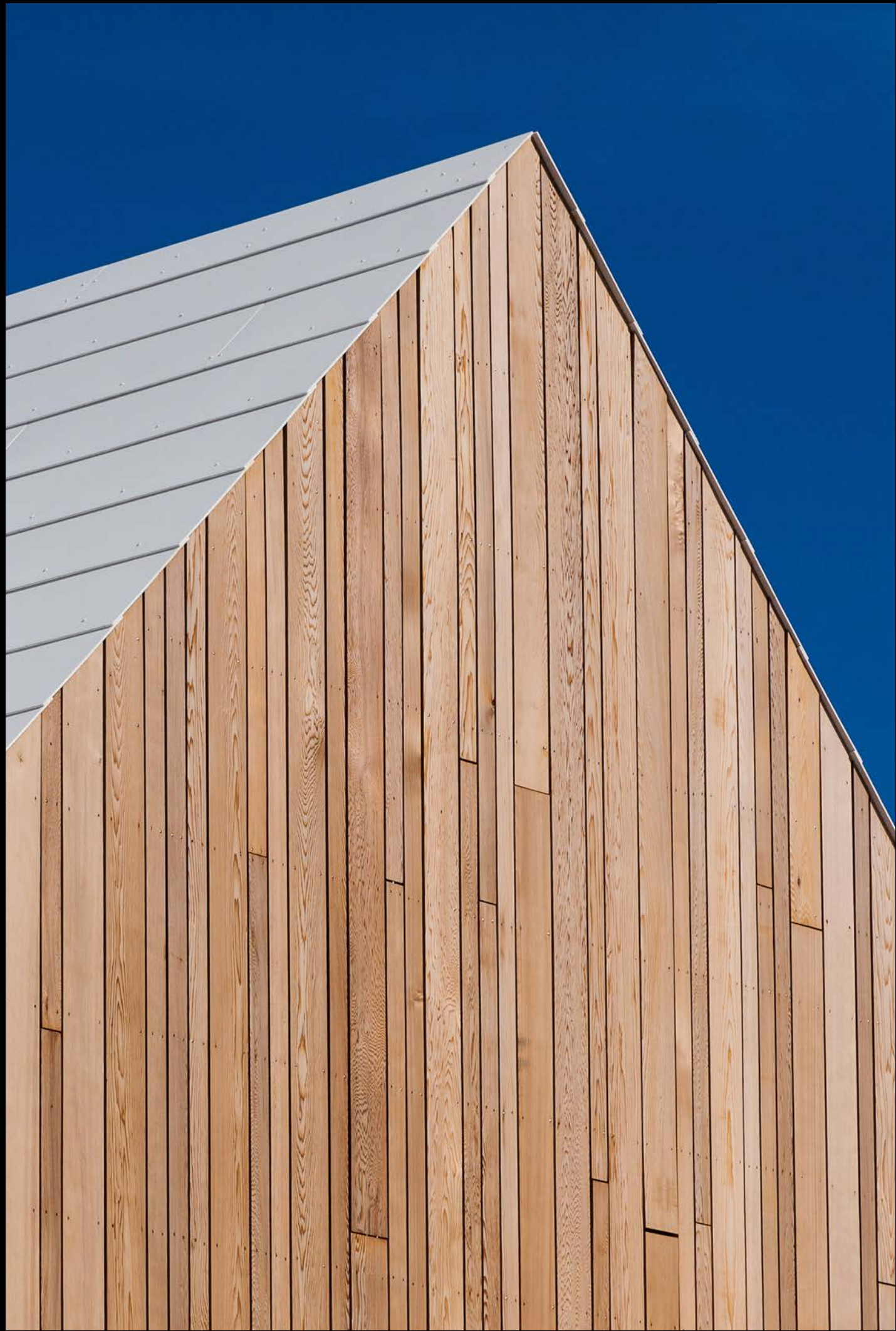




Berlufsnænge
12.12.17

Kvarfiskjærengen i Hævedal
Ringsbrygge 71





ENTRANCE

The main entrance is facing the hospital distribution road creating a functional coherence with the hospital facilities. It is marked by cedar wood cladding as a warm welcome towards the users and as a clear visual element.

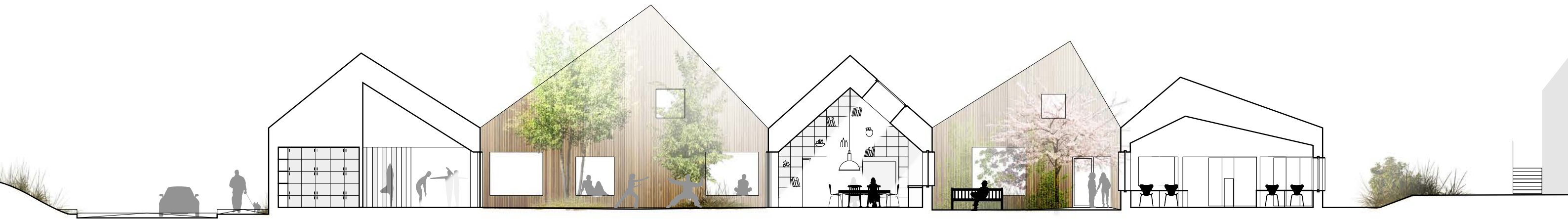




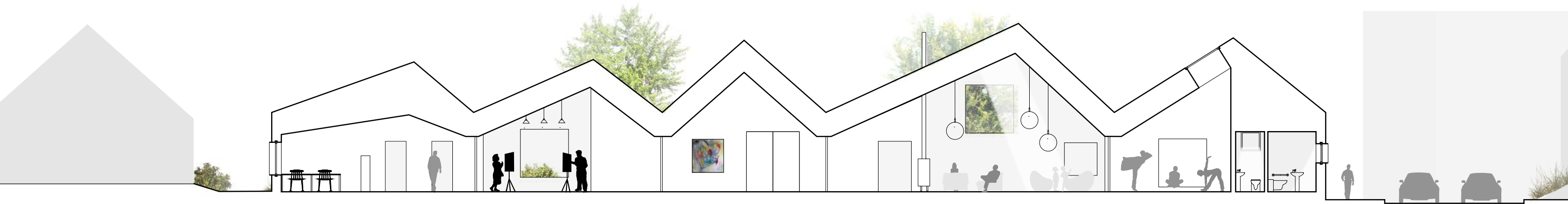
'LIVSRUM' - THE LIVING ROOM

When entering the house you meet a large oak table in an informal living room rather than a reception. The central space has direct access to the rest of the house and the courtyards.





SECTION AA



SECTION BB



THE ACTIVITY COURTYARD



THE ACTIVITY COURTYARD





THE GARDEN COURTYARD



SENSE GARDEN

The smaller of the two courtyards is the sense garden - it has a variety of plants, bushes, trees and natural stone elements including a water element. There will be a variety of scents and the sound of water.



SPACES FOR EVERYONE

The users vary from kids to elder people. Some are disabled while others come to excersize. Some come to meet other pations casually while others seek privacy and counselling. Therefore all spaces in the house are designed individually according to the function and creating a variation in atmosphere and contact to neighbouring spaces.





NICHES

The windows facing the courtyards are designed with deep wooden bamboo framing so they become niches for sitting. A more informal place to rest and relax.



LOUNGE AND LIBRARY



LOUNGE AND LIBRARY



LOUNGE AND LIBRARY

The lounge is positioned 'en suite' in connection with the living room and the larger multipurpose room. Acoustic sliding doors can separate noisy events from the lounge.



ADMINISTRATION AND COMMON SPACE



ADMINISTRATION AND COMMON SPACE



'LIVSRUM' The heart of the house is the *'living room'*



The gable is a bamboo shelf with entrances to the smaller counseling rooms.



ONE OPEN HOUSE + PRIVATE COUNCELING SPACES

The need for privacy in the counseling center is as important as the openness and social quality of the house. Small and acoustically separated spaces are provided next to the main space.



CONNECTION TO COURTYARD FROM TRAINING AND EVENT SPACE



COMFORTABLE DAYLIGHT

*The quality of daylight is a main theme in the design of atmosphere and comfort in the houses.
All main spaces has daylight from more than one direction and skylights to lighten up surfaces and geometry.*

Hvad er status 1 år efter indflytning?



Hvad er status 1 år efter indflytning?

Antallet af brugere er mere end fordoblet i løbet af det seneste år..



Hvad mener brugerne?



Hvad mener brugerne?

"Salen er superfed at lege i"

William 9 år

"Jeg vil faktisk hellere være her end hjemme, jeg er mere rolig og har det bedre, når jeg er her"

Kvinde i 50'erne med brystkræft

"Et hus man føler sig godt tilpas i med det samme....brugen af naturmaterialer, haverne, lysindfaldet, farverne, indeklimaet, husets lyd"

Værtsfrivillig

"Må jeg tage nogle billeder af reolerne? Sådan nogle vil jeg bygge i mit hus"

mand i 60'erne med fremskreden lungehindekræft

"Jeg sover fint her i nichen"

Sofie 13 år med støvler og overtøj og det hele, mens hun venter på mor og far.



LIVSRUM

KRÆFTRÅDGIVNINGSCENTER

Bygherre: Kræftens Bekæmpelse & Realdania
Arkitekt: **EFFEKT**
Ingeniør: Lyngkilde
Entreprenør: Hoffmann
Specialister: Jeanet Lemche, PHD Sundheds arkitektur
Anne Kathrine Frandsen, PHD Helende arkitektur

